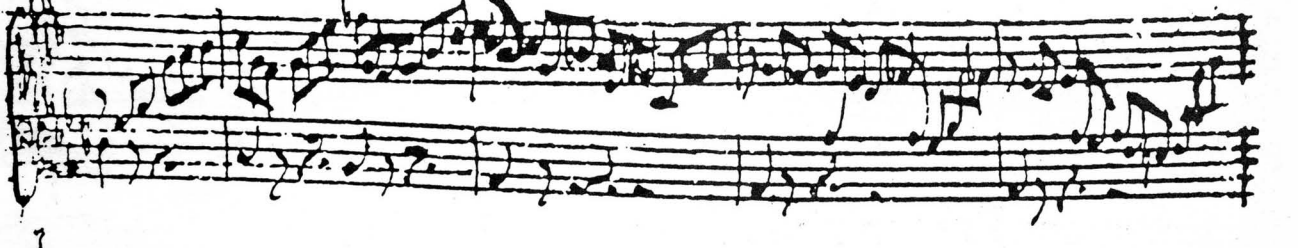
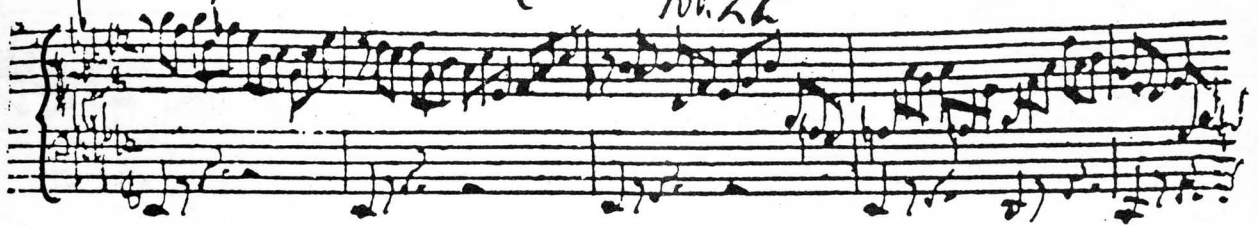
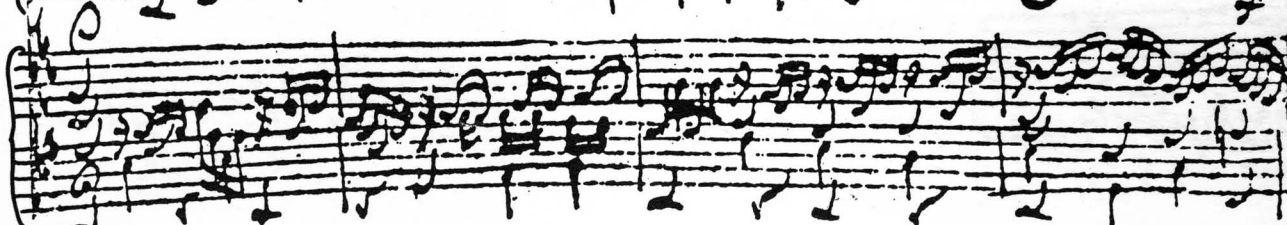
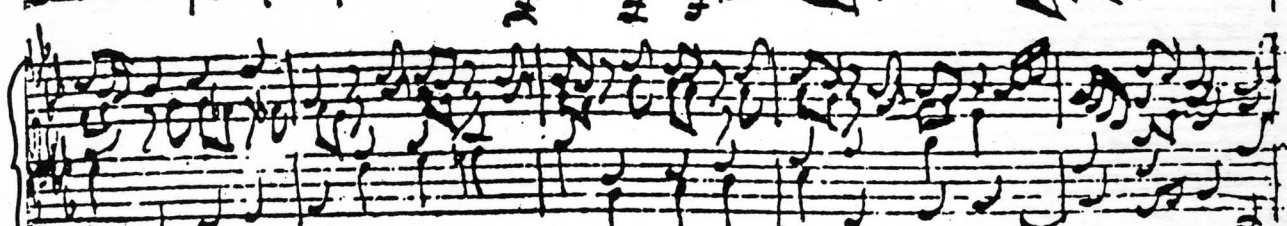
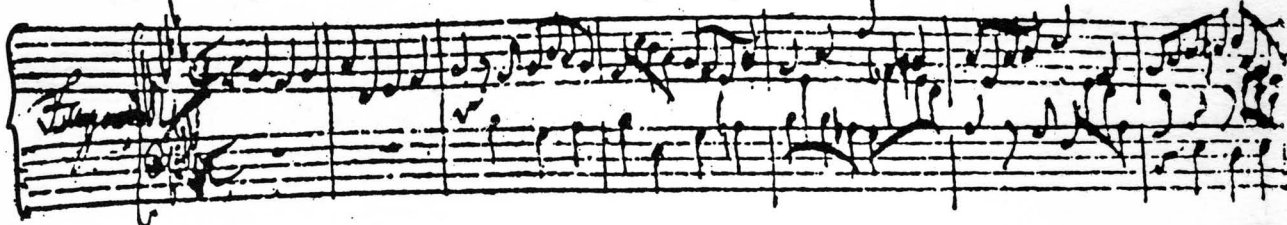
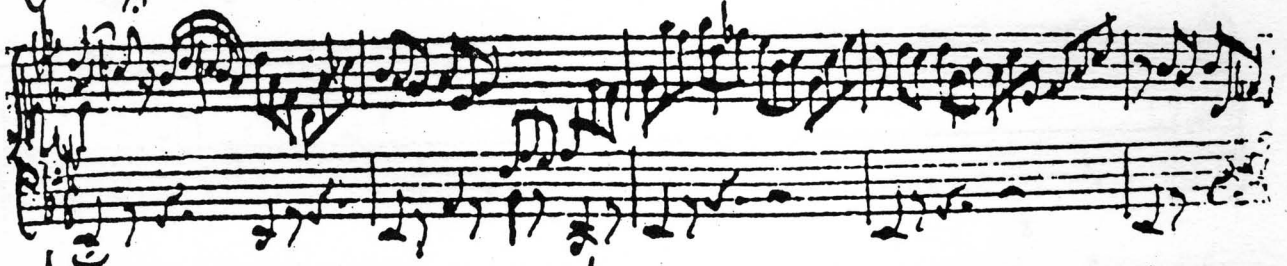


Prelude pour la Luth. à 6 cordes. No. 22 par J. S. Bach.



Handwritten notes and signatures at the bottom of the page, including the name 'J. S. Bach' and other illegible markings.



This image displays a page of handwritten musical notation, consisting of ten systems of staves. Each system contains two staves, likely representing a grand staff for piano or a similar two-part setting. The notation is dense and intricate, featuring a variety of rhythmic values, including eighth and sixteenth notes, as well as rests. The handwriting is fluid and characteristic of a composer's sketch or a working draft. The paper shows signs of age, with some discoloration and slight wear at the edges. The overall layout is organized into ten distinct horizontal sections, each with its own set of two staves.

A handwritten musical score consisting of ten staves. The notation is dense and includes various musical symbols such as notes, rests, and clefs. The handwriting is in black ink on aged paper. The score appears to be a single melodic line with some accompaniment, possibly for a piano or guitar. The notation is somewhat messy and includes some illegible markings, particularly in the lower staves.

Handwritten notes and symbols at the bottom of the page, including the letters "CEG" and various musical notations.